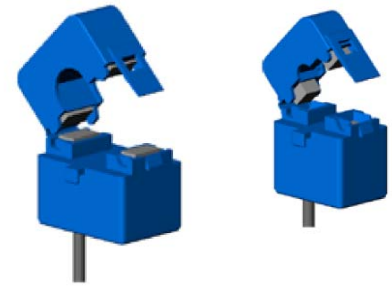




SCL Miniature Retro-fit Current Sensors

The ND SCL series of retro-fit current sensors are manufactured for use with ND type "V" Meters (*Cube 350V*, *Cube 400V*, *PowerRail 350V*, etc). They offer fast and easy installation without the need to disconnect any loads – ideal for retro-fit Energy Management Systems.

With a safe low voltage output, there are no worries about open-circuiting CT secondary circuits.



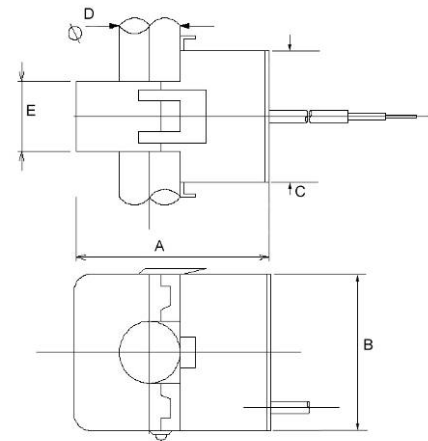
SCL16
50 or 100 Amp

SCL8
5 Amp

- **Miniature Size**
- **Low Cost**
- **Safe, easy & simple to install**

Brief Specification

Electrical	
Nominal Input Current I_n	
SCL8 - 5	5 Amp
SCL16 - 50	50 Amp
SCL16 - 100	100 Amp
Maximum Input Current I_{max}	
SCL8	100 Amp (1kA 1 minute)
SCL16	300 Amp (4kA 1 minute)
Output at I_n	
SCL8 - 5	333 mV at 5 Amp
SCL16 - 50	333 mV at 50 Amp
SCL16 - 100	333 mV at 100 Amp
Frequency Range	50-60 Hz
Accuracy ($0.1I_n - 1.2I_n$)	
SCL16	± 1%
SCL8	± 2%
Temperature Coefficient	60 ppm / °C



Nominal Dimensions (mm)

Model	A	B	C	D	E
SCL8	43	37	32	8	13
SCL16	51	45	37	16	18

Mechanical	
Enclosure	Plastic to UL94V-0
Insulation Voltage	300 V_{rms} CAT III
Environment	Indoor use only, altitude < 2000m
Operating Temperature	-25°C to +70 °C
Storage Temperature	-30°C to +90 °C
Humidity	Max 80% RH at 30°C Non-condensing
Output Connection	1m captive cable