

System pro *E* comfort MISTRAL® Create your own masterpiece

The new System pro *E* comfort MISTRAL® series of consumer units gives installers the freedom and flexibility to install almost any type of electrical distribution system in industrial, commercial or residential environments. These innovative units have been designed from scratch to enhance the unique features you expect from ABB in terms of versatility, efficiency and safety.

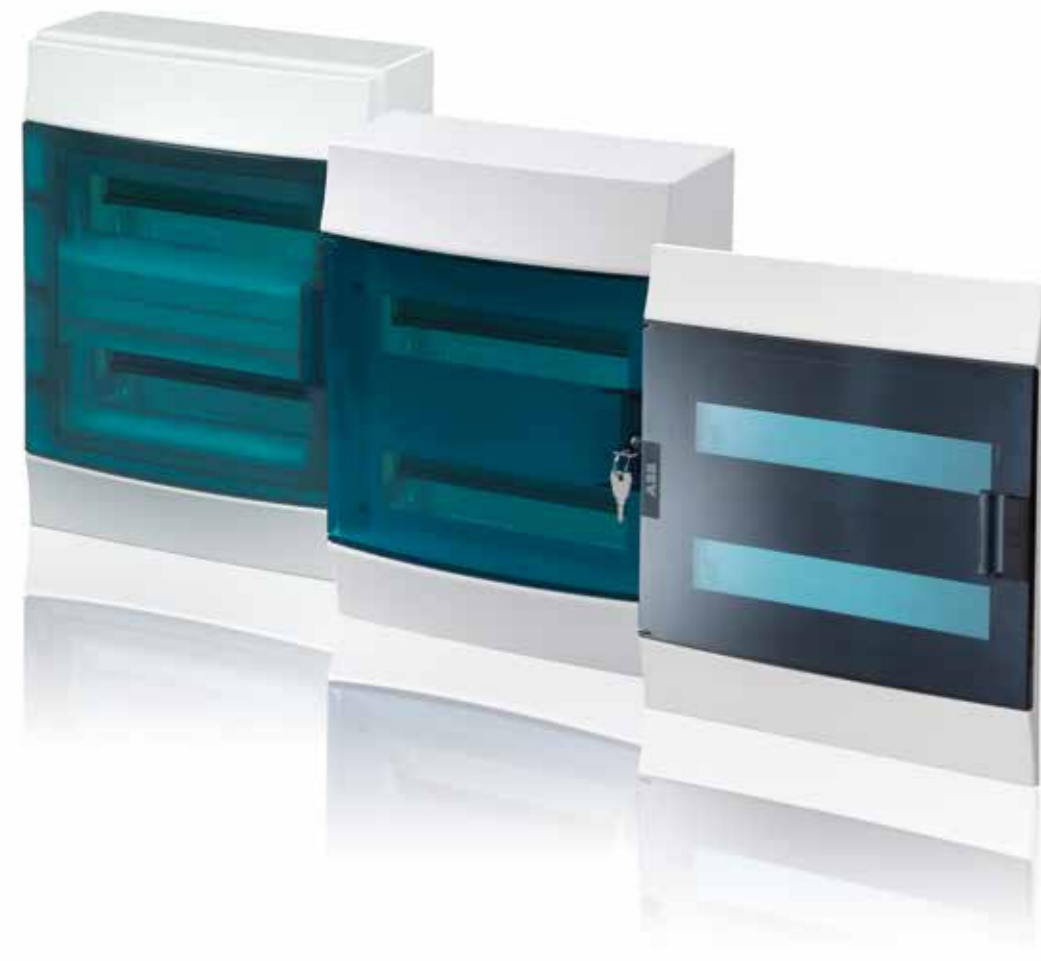
Fast and easy installation

Ample internal space makes cabling fast and easy, and also enables installers to anchor cable ties to special eyeholes in the frame. Various snap-on terminal blocks in two different colours can be installed in both the upper and lower part of the units, offering even more flexibility. The new System pro *E* comfort MISTRAL® series is also fully compatible with a unified range of ABB accessories for a wide variety of applications.

Elegant design features

Made from halogen-free (for GWT650 versions), recyclable thermoplastic, the series comes with IP41 and IP65 ratings. It also includes flush-fit and wall-mounted versions so there's always a solution to fit decorative requirements. Other elegant design features include transparent or opaque doors that open up to 180° enabling full access to the interior of the units. Perfect symmetry also means installers can rotate either the front panel or the entire unit so the door opens from the right or the left.

Everything about the new System pro *E* comfort MISTRAL® series has been designed to make installation easier, allowing installers to set up high-quality consumer units that look great anywhere.



Contact us:

ABB SACE
A division of ABB S.p.A.
Enclosures and Cable Systems
Viale Vicenza, 61
36063 Marostica (VI) - Italy
Phone: +39 0424 478200
Fax: +39 0424 478305

ABB b.v.
Low Voltage Products
Frankeneng 15
6716 AA Ede - Netherlands
Phone: +31 (0)318 669300
Fax: +31 (0)318 631718

www.abb.com/lowvoltage



© Copyright 2014 ABB. All rights reserved.
Specification subject to change without notice.

1SPC801051B0201 - 03/02/2014



System pro *E* comfort MISTRAL®
Create your own masterpiece

System pro E comfort MISTRAL41F series

Door opens up to 180° allowing full access to the interior of the unit.

IP41 rating for protection against granular foreign bodies and dripping water.

The depth of the base box ensures a perfect balance between internal space and installation in thin walls.

Screw covers are hooked to the front panel so they can be removed without the risk of losing them.

Symmetrical design allows reversible door that opens from the left or right.

Elegant design combines reliable technology with a modern, decorative look.



System pro E comfort MISTRAL41W series

Door opens up to 180° allowing full access to the interior of the unit.

IP41 rating for protection against granular foreign bodies and dripping water.

Doors available in three versions: petrol blue, metal and opaque. Units without doors are also available.

Concealed rear mounts for secure wall installation.

Symmetrical design allows reversible door that opens from the left or right.

The unit housing and all accessories have been developed to ensure class II double insulation protection.

The standard door with ergonomic handle is available with a lock for added security.



System pro E comfort MISTRAL65 series

Door opens up to 180° allowing full access to the interior of the unit.

IP65 rating for protection against dust and water jets.

As well as side knockouts for cable entry and exit, units can be supplied with cable entries and exits at both the top and the bottom.

Robust construction allows installation in industrial, commercial or residential environments.

Symmetrical design allows reversible door that opens from the left or right.

The standard door with ergonomic handle and snap-on closure can be supplied with a lock and key on request. This ensures only authorised people have access and prevents tampering or incorrect operation.

