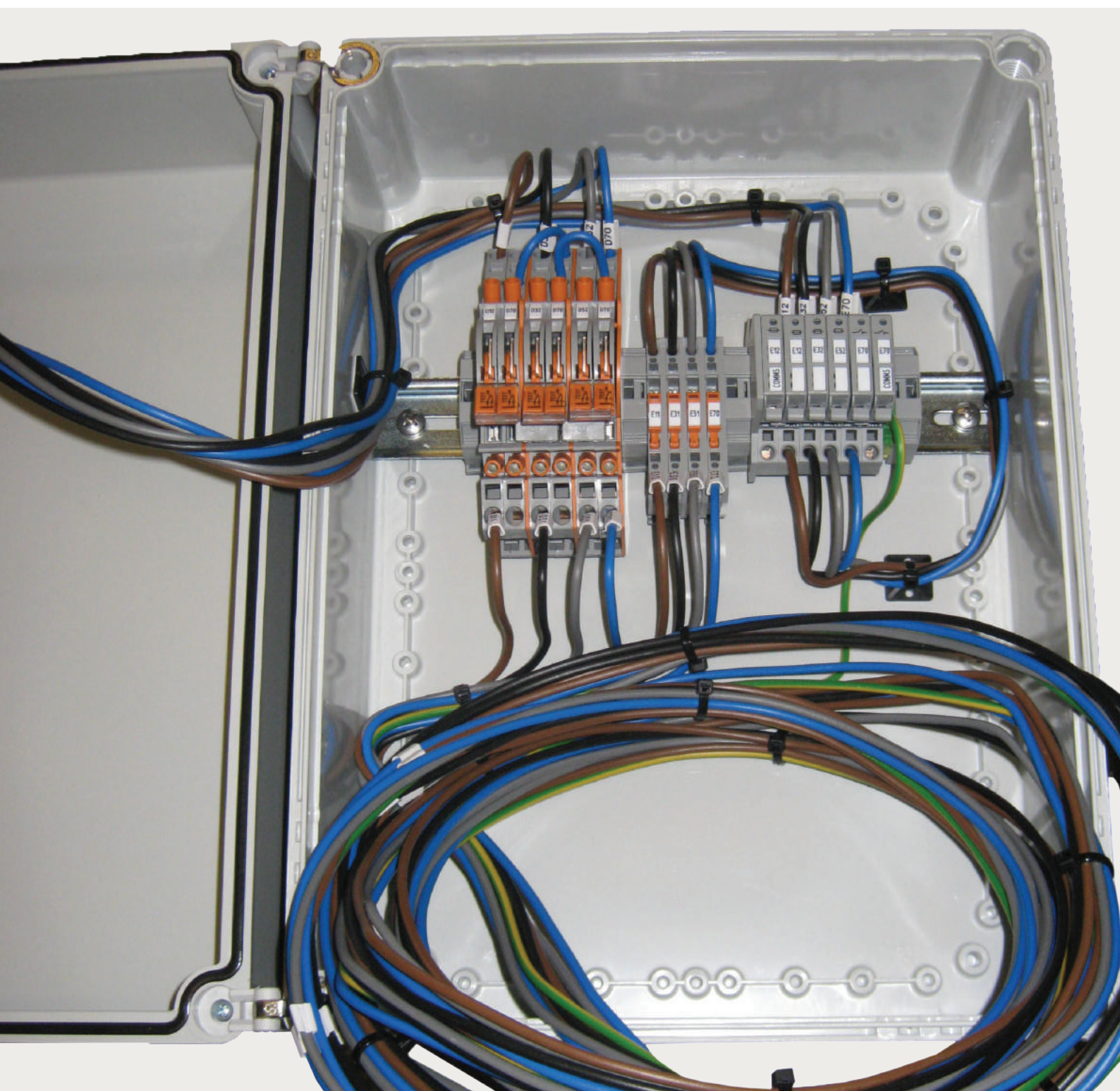


Code of Practice Five

(COP5- 1MW) remote metering box assembly for one Meter



The COP5 box assembly by WAGO LTD comprises:-

3 pairs of CT terminals (282-870) suitably configured to ensure the CT's cannot be left open circuit when the meter is disconnected. This is achieved by means of a sliding lever built into the terminals. The CT terminal levers are clipped together so both operate simultaneously, lockouts are fitted to stop accidental moving of the levers. Additional wiring and links have been added so that only 4 wires are required from the CT's (1 per CT and 1 commoned return) and 4 wires going to the meter.

- 4 x isolation terminals with test points for the incoming VT wiring.
- 3 x 4A fused terminals and 1 disconnect terminal for the VT connections to the meter.
- 1 x 2A fused terminal and 1 disconnect terminal for auxiliary devices.
- 1 x 2 conductor 2.5mm² earth terminal.

The unit is supplied in an ABS hinged lid box 380 x 280 x 180mm suitable for mounting 1 meter on the lid, the 2 corner fixing screw points are drilled to allow locking wire seals to be used.

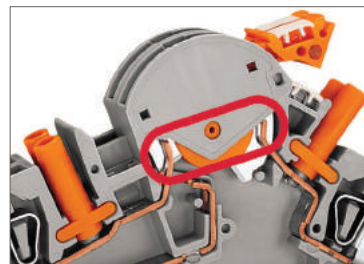
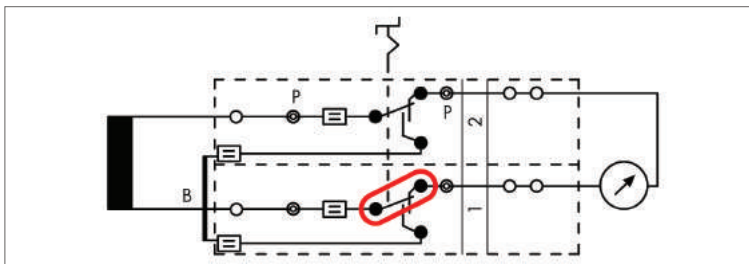
The terminals and wiring are marked with terminal and wire markers in accordance with REC requirements, the CT wires are 3m long and meter wires 500mm long.

All boxes are supplied tested with a certificate of testing and conformity.

WAGO part number 50078315.

Description and Handling:-

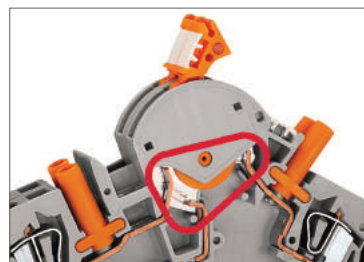
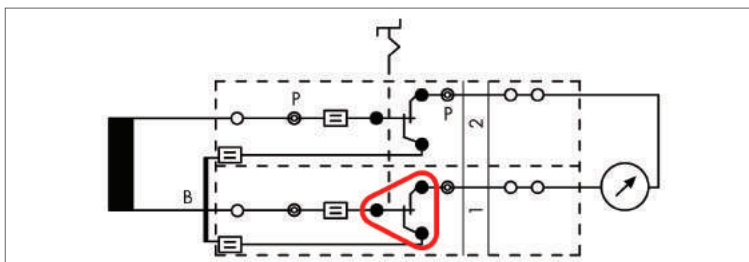
Disconnect link in notched position "I"



In position "I", the measuring instrument is connected to the transformer.

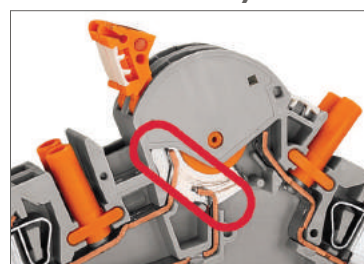
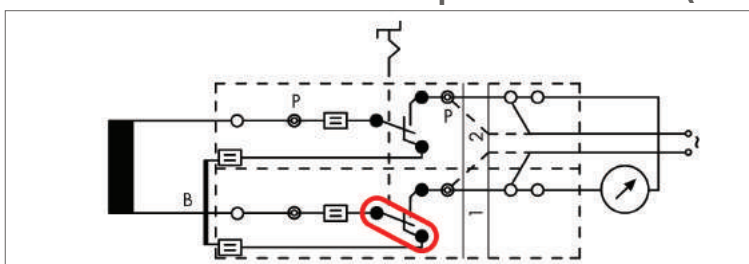
B = shorting jumper
P = test socket

Disconnect link in transition from "I" -> "TEST" (terminal blocks 1 + 2)



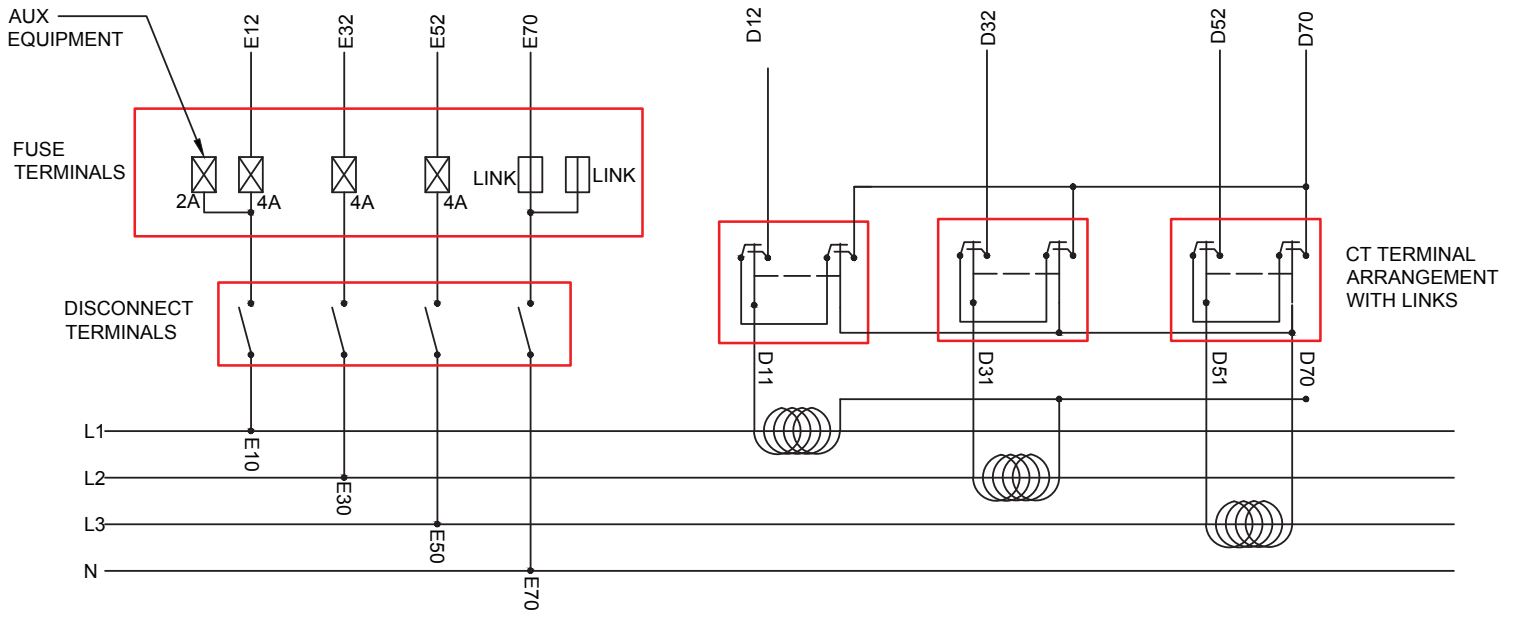
By moving the interlocked disconnect links from "I" to "TEST" the shorting path is activated without disconnection of the measuring instrument yet.

Disconnect link in notched position "TEST" (terminal blocks 1 + 2)

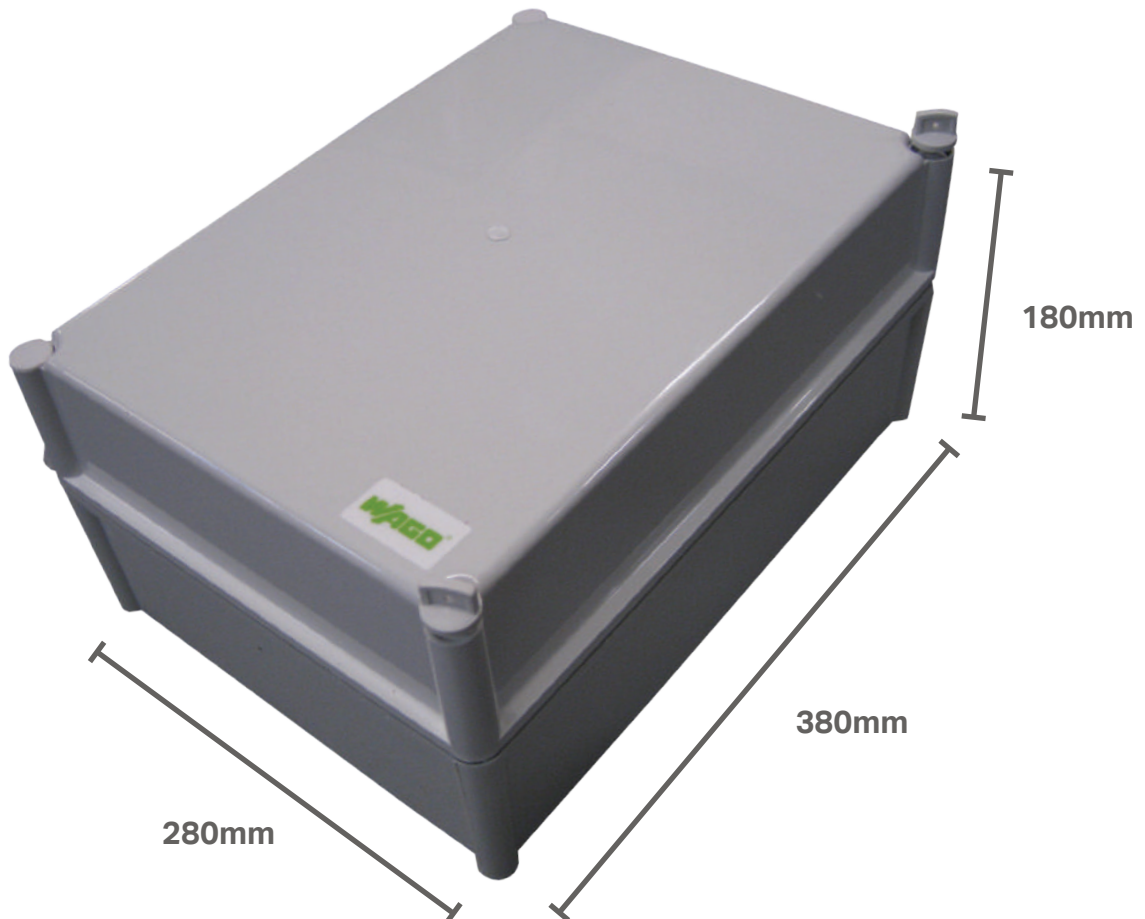


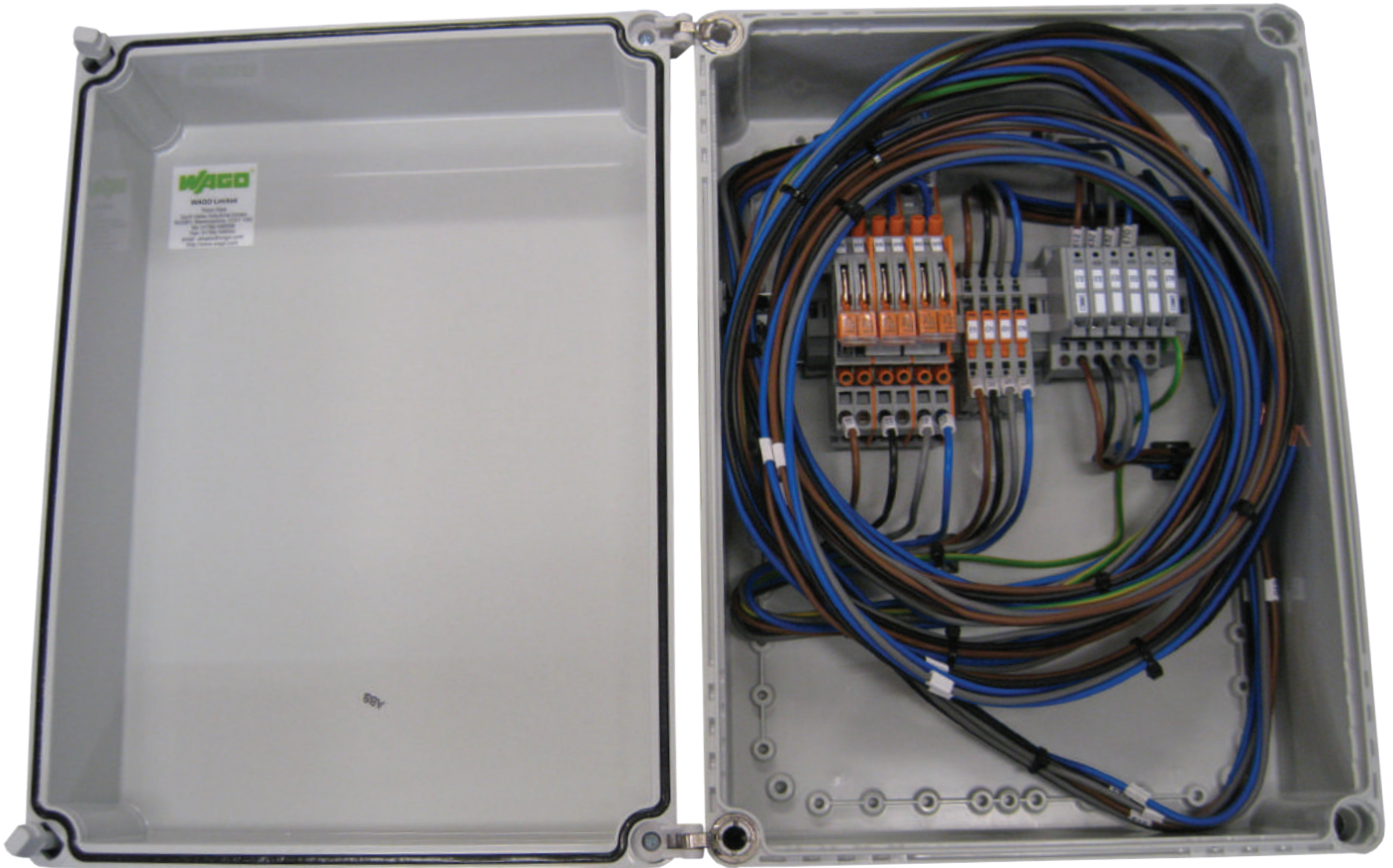
The measuring instrument is electrically disconnected from the transformer. In this position, if necessary, external voltage can be applied via sockets, or the 2nd CAGE CLAMP® connection for relay testing in transformer protection circuits.

COP5 Connections to Meter and CT's:-



COP5 Enclosure Dimensions





WAGO also produce a COP3 main and check meter box arrangement and a COP2 meter box, see separate data sheets.

Other variations of metering boxes are available upon request, or our Engineering Department can design a solution for your requirements.